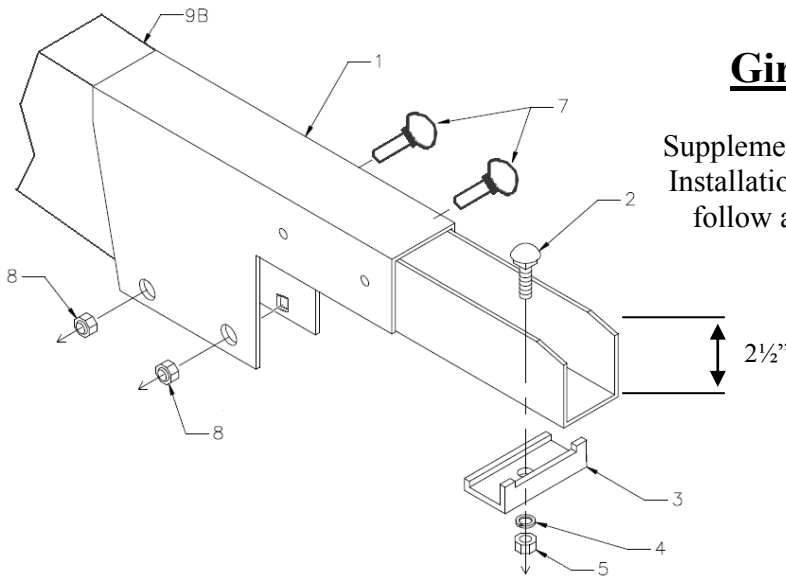


Girder Clamp Installation Instructions

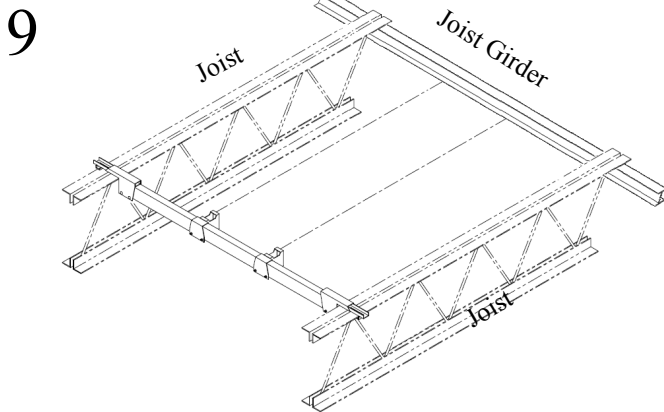
For Use with 2½" Joist Girder Spacing

Supplemental instructions for use with Tube Framing Clamp System Installation Guide for the installation of Girder Clamp. Review and follow all warnings and notes specified in Tube Framing Clamp System Installation Guide.

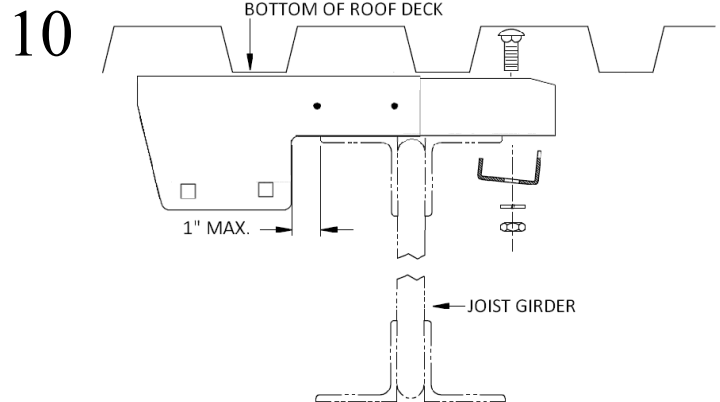


Item	Qty.	Description
1	1	GIRDER CLAMP
2	1	½" x 2" CARRIAGE BOLT
3	1	RETAINER HEEL CLIP
4	1	½" LOCK WASHER
5	1	½" HEX NUT
7	2	½" x 3" BOLT Grade 5
8	2	½" LOCKNUT
9B	1	TUBE – CROSS

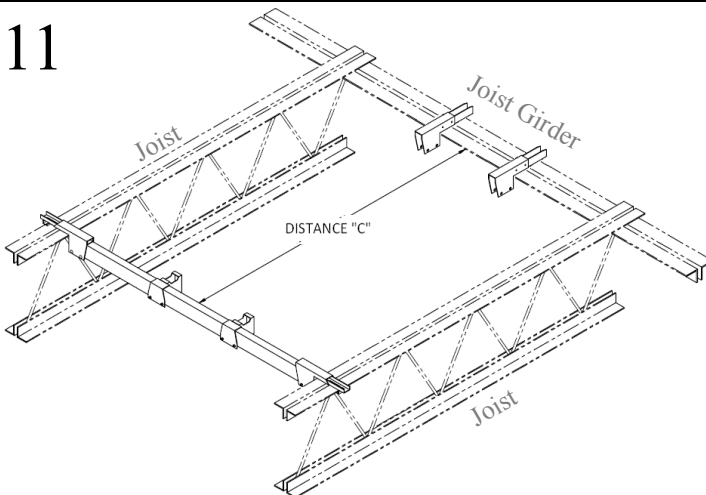
Follow Tube Framing Clamp Installation Guide instructions Steps 1-8.



Identify four points that form a rectangle on the Main Tube and Joist Girder. This is where the T-Brackets and Girder Clamps will be installed. Slide T-Brackets to desired locations. Tighten bolts.

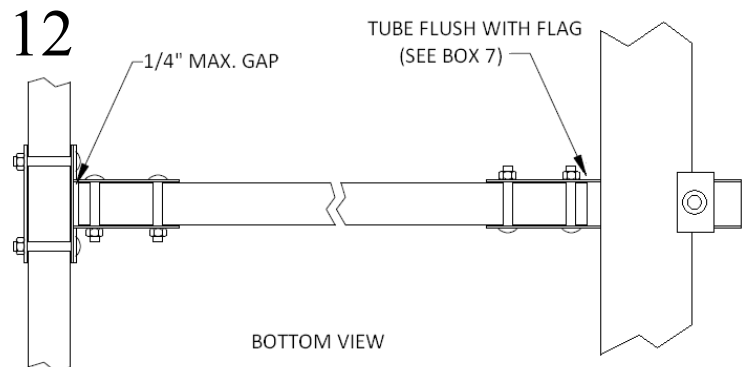


Slide Girder Clamp (1) over joist girder and below roof deck at location directly across from corresponding T-Bracket. Attach this Girder Clamp with Heel Clip (3) and tighten. Make sure the Girder Clamp is no more than 1" from joist as shown. Repeat for each Girder Clamp.



Measure the distance "C" between the Main Tube and girder. Subtract ½" from measurement "C". Cut Cross Tubes (9B) to length.

$$\text{Distance C} - \frac{1}{2}" = \text{Cross Tube length}$$



Insert Cross Tube into wings of T-Bracket and Girder Clamp as shown. Be sure tube is within ¼" of the back of the T-Brackets and Flush with the back of the Girder Clamp flag. Secure with bolts and locknuts. Repeat for each desired Cross Tube. Tighten everything.

Note: If Structural Engineer calls for additional support, ½" x 3" tubing may be secured to Cross Tubes with Tube Clips.

Assembly is now complete.