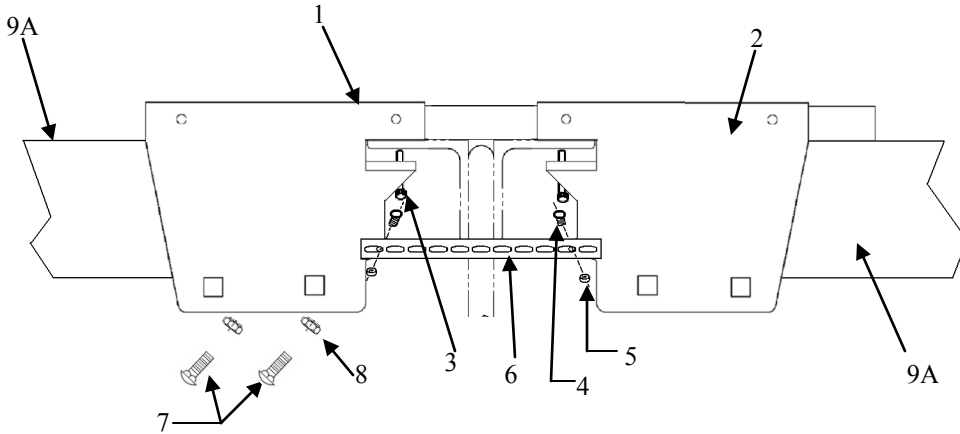




# Inline End Clamp Installation Instructions

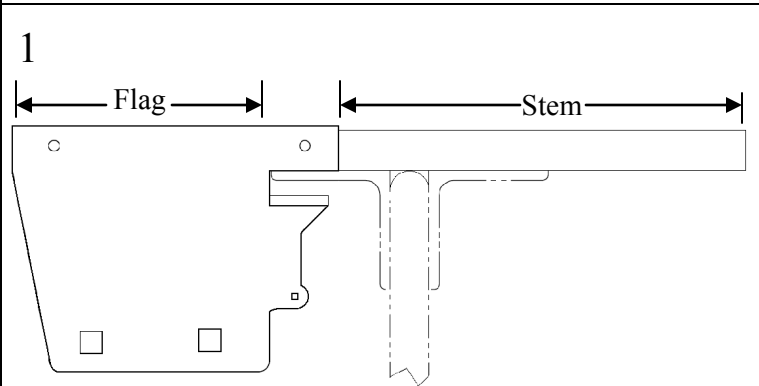
## FOR USE WHEN END CLAMPS ARE NEEDED ON BOTH SIDES OF JOIST IN SAME DECK SLOT

Supplemental instructions for use with Tube Framing Clamp System Installation Guide for the installation of Inline End Clamp. Review and follow all warnings and notes specified in Tube Framing Clamp System Installation Guide.

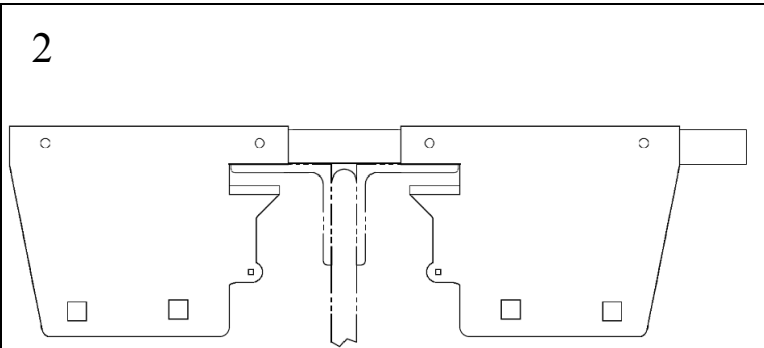


It.	Qt.	Description
1	1	Male Part (1) Inline Clamp
2	1	Female Part (2) Inline Clamp
3	2	3/8" SELF-LOCKING HEX BOLT
4	2	1/4" CARRIAGE BOLT
5	2	1/4" NUT
6	1	STRAP
7	4	1/2" x 3" BOLT Grade 5
8	4	1/2" LOCKNUT
9A	2	TUBE-MAIN

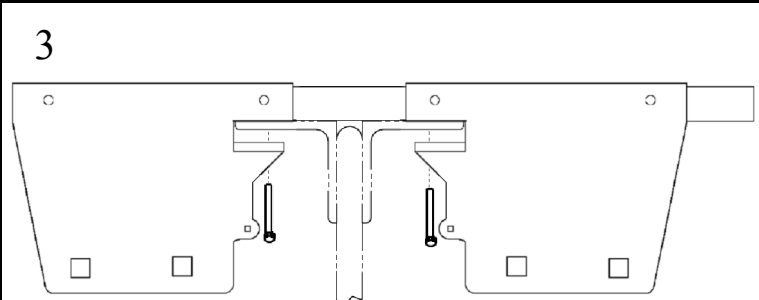
### Follow these instructions in place of Step 5 on the Tube Framing Clamp System Installation Guide.



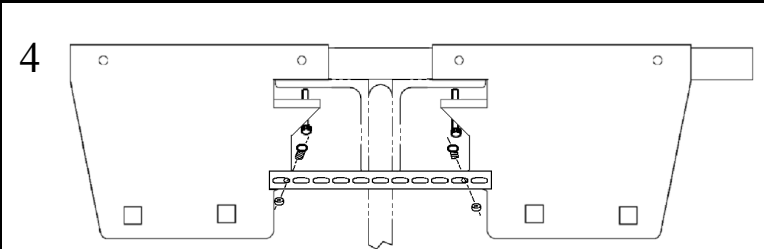
Slide stem of Part 1 (1) over joist into the deck opening over the joist at Point 1 and center in pocket.



Slide Part 2 (2) over stem of Part 1 so that the two parts are snug against the joist, as shown.



Tighten both 3/8" Self-locking Hex Bolts (3) to secure Parts 1 and 2 to joist.



Attach Strap (6) with corresponding holes on Part 1 and Part 2. Insert 1/4" Carriage Bolts (4) from the inside of clamp and secure with Nuts (5) as shown.

### Continue with Tube Framing Clamp System Installation Guide Step 6.

**Note:** Final installation of entire system must include tubing attached to both saddles of Inline End Clamp as shown. If tubing is only needed on one side, the basic End Clamp should be used.